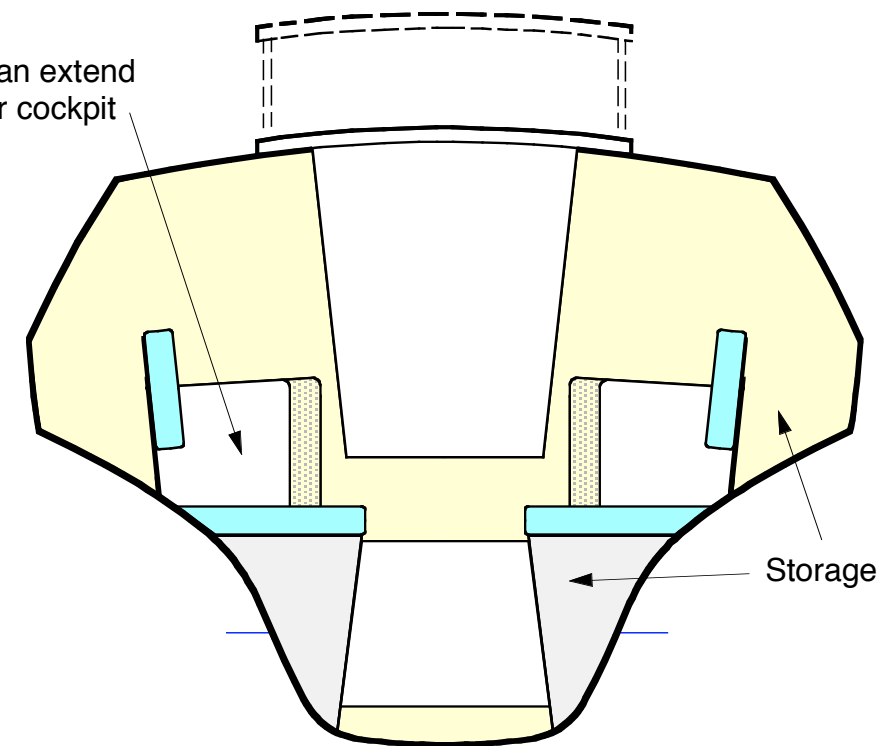
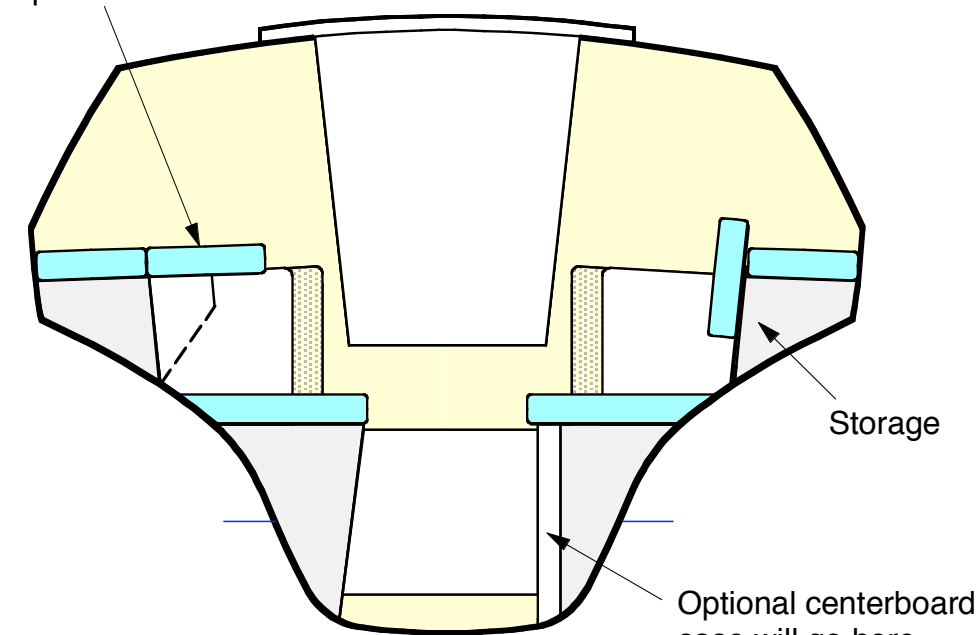


Settee berths can extend further aft under cockpit



**INTERIOR SECTION**  
 (Looking aft)

Optional wing berth is setup like this



**INTERIOR SECTION**  
 (With opt. c/board and wing berths)

# THE F-22™ SPORT TRI INTERIOR

Full Cabin Version

Scale 1 : 20 & 1 : 36

August, 2005

A Design By Farrier Marine, Inc.  
 P.O. Box 40675, Bellevue WA 98015, USA